

“

Connecting Technology and People.
Specialising in Intelligent
Infrastructure Solutions.

HEAD OFFICE

+27 11 210 3500

21 Mandy Road | Reuven | Booyens | Johannesburg



www.basixgroup.co.za

ELECTRONIC SECURITY
SOLUTIONS



about us

ELECTRONIC SECURITY SOLUTIONS

“

We are a future-focused system integrator and solution provider for Intelligent Infrastructure Solutions

With our innovative approach focusing on the development and integration of technologies, we deliver small to large-scale projects with an industry-leading portfolio of solutions grouped together under the concept of intelligent infrastructure.

We have been responsible for some of the largest system integration projects in South Africa, from electronic security to intelligent transport solutions.

Our long-term experience and knowledge in the electronic security solutions domain gives us that edge over our competitors. We offer solutions based on the requirement of the business and value the importance of providing a reliable service backed by quality and commitment.

These solutions are vast and include an array of opportunities over and above the modern security concepts and principals, such as visual and audio detection, facial recognition and matching, intelligent search, and 5G edge sensors.

CONNECTING PEOPLE AND TECHNOLOGY

our services



ELECTRONIC SECURITY



INTELLIGENT TRANSPORT



PUBLIC TRANSPORT



COMMUNICATION INFRASTRUCTURE



COMMAND & CONTROL SOLUTIONS

Design

Engineering

Project Management

Installation

System Integration

Commissioning

Support

Service

Maintenance

OUR OFFICES

Gauteng

Johannesburg
Pretoria

Eastern Cape

East London
Gqeberha

Western Cape

Cape Town

KwaZulu Natal

Durban

Free State

Bloemfontein

North West

Klerksdorp

We do not simply install; we engineer, build and bring new ways to solve the challenges of today, by saving time, money and driving continuous improvement on any capital delivery, upgrade or maintenance programme.

As more systems become interconnected, electronic security solutions have stretched beyond video and access control and include a range of integration and functionality. This takes a significant level of knowledge, engineering capability and industry knowledge. We offer the initial consultancy and risk assessment process through to design and engineering. Our services include fault finding, repair and emergency upgrades together with service level agreements and call-out response strategies. We have developed a variety of maintenance plans for individual site needs. These tailored plans deliver smooth, uninterrupted operations, reduce operational costs, increase efficiency and prevent downtime.

With our national footprint, we offer our services throughout South Africa and our fundamental goal is to leverage on emerging security technologies in line with existing systems and projected growth, to future proof your operations.

01

CCTV SURVEILLANCE



The capabilities of surveillance cameras have been transformed by fundamental shifts in how digital data is gathered, analysed and stored.

Securing your business in an era where technology evolves rapidly, is more critical than ever. CCTV cameras play a key role in driving security. Recently deep learning algorithms and AI have become more prevalent, as cameras are able to more accurately gather data and make predictions based on system integrated analytical software.

Advances in technology mean that there are numerous choices to make when choosing a CCTV Surveillance Solution. From remote access, software-driven engineering and open platforms to cloud-based solutions, which has become the powerhouse behind the Internet of Things (IoT), and a network of connected devices, all offering a reduction in hardware costs, it has become more and more apparent that all investments in security must pay for themselves, by capturing smart data.

Common Challenges

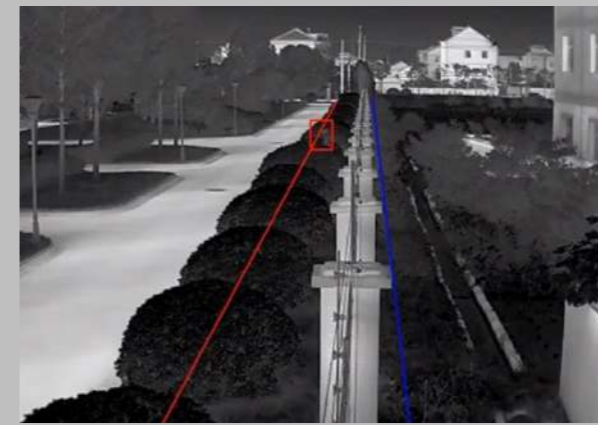
- Ensure 24-hour safety for customers, employees and assets
- Collect clear, high quality video clips for investigations
- Reduce labour cost with AI-empowered intelligent applications
- Enable remote maintenance and services



Perimeter Solutions

Creates an effective line of defense, detects critical targets, issues instant alerts and deters intruders with visual and auditory warnings.

- Line crossing and intrusion detection
- Real-time monitoring and alarm
- Recognition / deep learning algorithms



Thermal Cameras

Capture and create an image of objects by using infrared technology which adapts to challenging conditions such as darkness.

- Detects hidden objects or people
- Longer effective detection distances
- 24/7 real time alarm with high accuracy



Facial Recognition

A technology used to verify personal identities by pinpointing and measuring facial features from a digital image or a video frame.

- Safest touch-free identification method
- More accurate in identifying
- Recognition takes less than a second



ANPR Solutions

Automatic Number Plate Recognition enables cameras to read vehicle number plates by using high-speed image capture technology.

- Police, security, mobile and fixed solutions
- Car park management
- Smart city solutions



02

intelligent VIDEO ANALYTICS

“

Intelligent video analytics in video surveillance systems have become more commonplace to improve security and safety processes.

Thanks to the development of artificial intelligence (AI) algorithms, analytic platforms offer people counting, heat mapping, facial recognition, object tracking, crowd detection and a host of other features which provide actionable business intelligence.

The movement from traditional, analogue surveillance technology to IP (digital) surveillance solutions has given security professionals access to a much broader functionality, and video surveillance devices are being integrated into other physical security and building management platforms to provide more intelligent data. IP cameras can create digitised video data streams that can be carried via network cabling or via Wi-Fi. Crucially this has changed video monitoring and CCTV from reactive to proactive real-time tools.

1. **Motion Detection**
2. **Intrusion Detection**
3. **Loitering Detection**
4. **Automatic Number Plate Recognition**
5. **Wrong Detection**
6. **Object Tracking**
7. **Left and Removed Object Detection**
8. **People Counting**
9. **People Tracking**
10. **Pan-Tilt-Zoom (PTZ) Auto-Tracking**

03

access control

AND BIOMETRICS



Access control systems give you greater visibility and control over those who access your premises.

Your employees and customers can enter and exit your business via a single door or move across a complex network of multiple access points. As requirements become more complex, we combine various authentication methods, such as ID cards, fingerprints, passwords, facial images and QR codes, as well integrating the solution with your building's management systems. And with the rise of hybrid working patterns and the high demand for interoperable technology, monitoring and managing access in a secure area has become much easier.

Biometrics establishes a digital identity and transforms the experience of customers and employees. The wide range of applications and digital services bring a higher level of efficiency to any system.

1. **Anti-Pass-Back**
2. **Facial Identification**
3. **Fingerprint Identification**
4. **Iris Identification**
5. **Voice Identification**
6. **Digital Onboarding**
7. **Advanced Security Checks**
8. **Document Capture and Verification**
9. **Security Protocols**
10. **Secure Encryption**



04

visitor

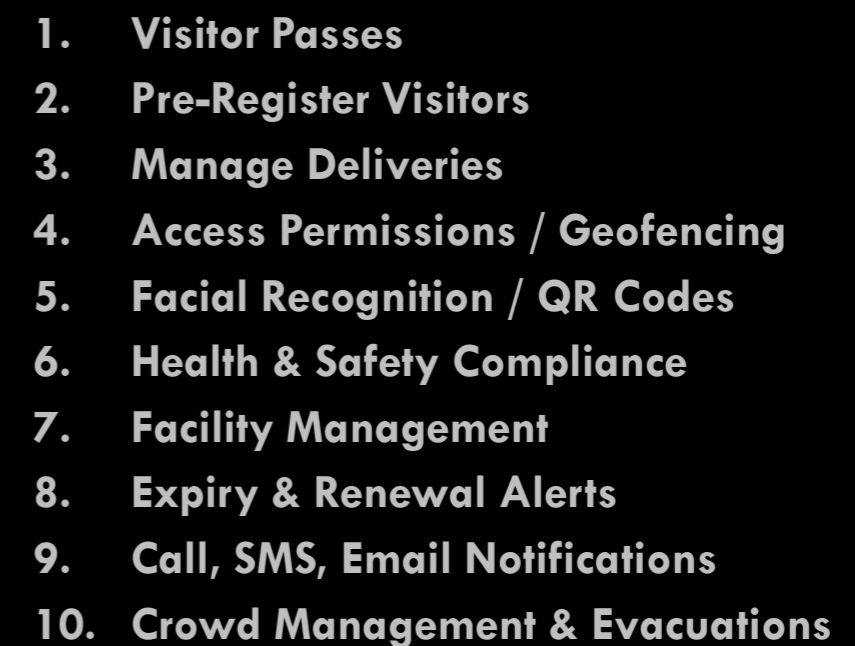
MANAGEMENT

“

Visitor Management provides real-time visibility and enables easy management of visitors, personnel and contractors.

These efficient and productive systems are user-friendly and help streamline the access and tracking process, with comprehensive sign-in solutions to manage identities, pre-registrations, and the safe and secure movements of personnel and visitors through buildings and work sites. In hybrid work settings, visitor management solutions streamline check-in processes, resource requirements and available workplaces.

They also provide detailed insights into visitor frequency, locations, and times to allow organisations to make decisions related to the safety and security of the premises. Real-time visual reporting highlights user trends, helping to improve on-site visitor management, including parking, desk and meeting room booking, facility management, catering and events.

- 
1. **Visitor Passes**
 2. **Pre-Register Visitors**
 3. **Manage Deliveries**
 4. **Access Permissions / Geofencing**
 5. **Facial Recognition / QR Codes**
 6. **Health & Safety Compliance**
 7. **Facility Management**
 8. **Expiry & Renewal Alerts**
 9. **Call, SMS, Email Notifications**
 10. **Crowd Management & Evacuations**

05



building management SOLUTIONS



An intelligent building is one that integrates technology and other systems to create a connected and efficient building.

Modern buildings comprise of a complex network of systems, all of which must be controlled. Traditionally, security, HVAC, fire, electrical power, lighting and business access – but as the number of systems that need to be managed grow, modern basics like intent access, Wi-Fi coverage, smart data sensors, IoT-connected office appliances and audio-visual solutions can also be controlled via a central platform.

The future of our built environment is being redefined and focuses on energy-efficient and sustainable building solutions, with a commitment to innovative green technologies, health and well being, connectivity and Smart Building as a Service (SBaaS). Smart buildings are no longer a futuristic concept, but a present-day reality, shaping how we live, work and interact with our environments.

- 
- 
1. HVAC System Management
 2. Lighting Control
 3. Electrical & Power Control Systems
 4. Water Management
 5. Fire Alarm Systems
 6. Electronic Security
 7. Call, SMS, Email Notifications
 8. Crowd Management & Evacuations
 9. Maintenance and Fault Detection
 10. Data Analytics and Reporting
- 
- 